

PRESS BOOK



WESTERN
ART & Architecture



There is no greater reward than seeing ones work published in magazines. Sharing vision, design and quality construction with an appreciative and interested audience is extremely fulfilling. It allows us to bring our story to life in text and images through the eyes and ears of gifted writers and photographers.

Publications

just a snapshot...

Vida Magazine

01. Issue 1: 2023

Santa Fe Magazine

02. Issue 1: 2021

03. Issue 2: 2022

Sotheby's Market Update

04. Q4 2021

Build Magazine

05. Issue 2021

06. Issue 2022

Haciendas Resource Guide

07. Guide 2019

08. Guide 2020

Western Art & Architecture

09. Apr/May 2018

01.

Vida Magazine

Issue 1: 2023

Vida

Ageless Living Today

2023

MY TAKE
BUNNY TERRY
ON CULTIVATING
CURIOSITY

SECOND ACTS
CHANGING CAREERS
PAST 50

DOWNSIZING?
UPSIZING?
FINDING THE RIGHT
HOME FOR YOU



Wellness Trends

PRP injections,
cooking with cannabis,
and more

SANTA FE + NEW MEXICAN



Copyright © 2023 Santa Fe New Mexican. Reprinted with permission.
All rights reserved. Add heading

RIGHT SIZING

Home may be where the heart is, but the right type of home depends on a variety of considerations. Three Santa Feans share how they found their ideal living situations for their phases of life.

By Kelly Koepke | Photos by Steven St. John



Dream Home Built for Two, and More

Jodi Vevoda moved to Santa Fe in 2011 after more than three decades working in the international publishing industry. Little did she know that she'd find a husband, start a career in the custom home building industry, and build her dream home here.

"Will is 68 and I'm 66. We met in Santa Fe 11 years ago and married seven years ago. He has been a high-end custom home builder in Santa Fe for more than four decades," she says of her husband, Will Prull, president of Prull Custom Builders. Vevoda is now executive vice president of the award-winning firm that constructs spec homes. She's also the associate publisher of *Santa Fe Magazine*.

When the couple met, they lived a quarter mile from each other on Bishops Lodge Road in older remodeled homes. When they married, it made sense to build something that reflected both their styles. While on a morning walk, Prull, a self-described country mouse, discovered their Las Campanas lot abutting Bureau of Land Management open space. Vevoda likes the amenities of city life but also appreciates views of the Jemez and Sangre de Cristo Mountains.

Local architect and friend Craig Hoopes consulted with them to design a space that could accommodate their love of the outdoors and entertainment, and their extensive art collection. Both Prull and Vevoda had separately and together traveled extensively, acquiring sculptures in Africa, metalwork in Mexico, and pottery. Vevoda had been purchasing paintings since the 1980s, and they both collect local artist Kellogg Johnson's ceramics.

"Our eclectic furniture wouldn't work in the new house, so we sold everything. We identified the larger pieces of art that went into the home together. It was fun to design the space for what we have, with the furniture coming later so the art stands out," Vevoda says. Prull acted as general contractor, and Vevoda engaged Santa Fe's Robin Gray Design to create rugs from wool and silks to the couple's specifications. Local Chandler Prewitt Design harmonized artwork, furniture, and other elements with the architecture.

The mid-century-inspired 4,350-square-foot three-bedroom, three-bath house offers spectacular views from the large windows in every room. The main suite is separate from the two guest rooms for privacy when family and friends come to visit.

The couple are also prepared for aging in place: there are no steps or elevation changes, and all the showers are walk-in. They moved in February 2018, and the house earned 2020 Haciendas Parade of Homes awards for best design, best kitchen, and best master suite.

While many home building and improvement projects are recipes for conflict, the couple says they worked together in a true partnership to build what they both



consider their dream home. Mixing their business and personal lifestyles, they've created a compound that's grown over the last five years. The pair is now building a guest house with a pool. The structure will serve as offices for their business and extra guest accommodations.

"The house is designed for entertaining, which we both love for personal and professional reasons. There's an outdoor kitchen and pizza oven, barbecue, and fire pit," Vevoda says. "We love to gather people . . . and often host business events and nonprofit events to give back to the community." ♦

Kelly Koepke and her husband built a guest house with the idea that someday one or both of her parents could live there, and that one day they would downsize into it themselves.

Vevoda and Prull's ideal home made space for their respective and shared art collections.

02.

Santa Fe Magazine

Issue 1: 2021

Santa Fe

MAGAZINE



1

ISSUE

**PRULL CUSTOM
BUILDERS**



Why we love them:

Because Will Prull does not talk like a typical builder. His background of working with European craftsmen, planting Forest Service trees, studying medicine and living in an ashram(!) means he prefers to talk about the land in Santa Fe, the history of architecture, Cabernet, and why friendship really matters. Not that he's not an expert builder—for 40 years he's created unique homes in Santa Fe. And Will's wife, Executive VP/Partner/Owner Jodi L. Vevoda, may be the better half, supercharging their marketing with expertise from Conde Nast, Time Inc., and USA Today. No, not your typical builder. Not buying it? Listen to Will talk.

—SANTA FE MAGAZINE

ART + ARCHITECTURE

On the Craft:

I started working in a Martinsville, New Jersey hardware store when I was 16. This was a *real* hardware store: we cut glass, threaded pipe, mixed paint, and all the bolts and nails were in bins. All the tradespeople came in and I wound up working for some craftspeople whose heritage went back generations in Europe: Germans, Italians, Polish...stone masons, woodworkers, all real craft people.

They were all respected, and they could actually live in the same neighborhood as the bank executive. It was a true honor to work with them and understand their quality and work ethic. That's the same quality, the same work ethic we follow today.

On Trees and Medicine:

I left home when I was 18 and hitched across country to work in the Forest Service in Oregon. Basically, I planted trees, probably four- or five-hundred-thousand of them. So I don't feel bad when I buy lumber...I did my part to replenish it!

My other interest was medicine, and I considered following that path, but building was where my heart was. I remember speaking to a college counselor, saying, "My parents want me to be a doctor, and it's interesting, but I really like the tangibility of creating things." She looked at me and said, "Well, Jesus was a carpenter."

On Quality:

I started by building small solar homes in El Dorado. Even though these were simple houses, they have features in them that were quickly copied by other home builders. They just *worked*.

Working as a startup builder in a modest price range, I always insisted on quality, architect-designed plans. Look, architecture is incredibly important. A good part of history is buildings—whether you're in Greece, Rome, Cambodia, or China. You have to get it right.

"The land in Santa Fe
is special. It used to
all be about walking
distance to the Plaza,
but in the last ten years
it's all about the views."

- WILL







"I remember speaking to a college counselor, saying 'My parents want me to be a doctor, and it's interesting, but I really like the tangibility of creating things.' She looked at me and said, 'Well, Jesus was a carpenter.'"

-WILL

ARCHITECT: LORN TRYK ARCHITECTS
 INTERIOR DESIGNER: MGB INTERIORS
 LANDSCAPE ARCHITECT: SERQUIS & ASSOCIATES
 PHOTOS: © ROBERT RECK



"We become a sort of guide to our clients, show them how to build a foundation here. We take them hiking, mushroom foraging, and fishing and elk hunting. Together we discover the land they're going to be living in...this beautiful, spiritual place."

-JOEL

ARCHITECT: HOOPES + ASSOCIATES
ARCHITECTS
LANDSCAPING: GREEN TRAIL
PHOTOS: © ROBERT RECK





Even as we began to grow, we always made craftsmanship and quality the hallmarks of what we do.

I learned Spanish Colonial carving and hand carved my homes' columns. There's nothing I haven't done in a house, from design to digging it out, from pouring the footings and stacking the block to doing the slabs, plaster work, and carpentry. There are builders in town who are good, but they've never worked in the field and don't truly understand the fundamental ways of how building materials interact.

The foundation is architect-designed homes, using only the top craftspeople, and always leveraging the newest technologies. We stay on the leading edge of science and tech in the construction industry; we were doing green building in the early 1990s, before anyone knew what it was!

On the Team:

We always have a dedicated supervisor for each job. Sure, it costs us more, but you really see it in the fine details and the lack of mistakes. Our supervisors are all builders in their own right, experts in Pueblo Revival, Territorial, and

Contemporary architecture. We're the gray hairs...seasoned professionals. We've worked together for decades and we all follow Pull standardized procedures that have been developed over 40 years.

There's always a family feeling here; people know they're taken care of. Health care, retirement programs, and we even help with loans so they can buy tools. We are a family...we want each of them to be successful.

On Friends:

We believe in exceptional customer service, not adequate customer service. There's a big difference. You have to surpass people's expectations, and that's what we do.

Our clients are our friends. With almost all of them, we travel, we dine, we hike, we have a good time. It's a real relationship, and that relationship is the most important thing for us—to enjoy each other, trust each other, to communicate well. After all, that's what matters.





ARCHITECT:
ARCHAEO ARCHITECTS
INTERIOR DESIGNER:
ANNIE O'CARROLL
INTERIOR DESIGN
ART STAGER:
NUART GALLERY
LANDSCAPE ARCHITECT:
SERQUIS & ASSOCIATES
PHOTOS: © ROBERT RECK



03.

Santa Fe Magazine
Issue 2: 2022

Santa Fe

MAGAZINE

ISSUE 2

HOW TO:
BUILD A GUITAR
UNDERSTAND THE STARS
QUIT THE FBI
BE A RAIN CATCHER
SAVE YOURSELF WITH AN ICE AXE
HIRE A GHOSTBUSTER
MACGYVER YOUR LIFE
BE A SAINT





Will's collection of early building books, including Mexican author William

SUSTAINABLE BUILDING: NOT ALWAYS WHAT IT SEEMS

The History of Sustainability

The Solar Home Book by Bruce Anderson came out in 1976. This caught my attention. It was amazing, full of home-built solar panels and homemade boxes of rocks with aluminum panels to capture solar heat. It contained the Van Dresser house, which was the first solar house in Santa Fe (in 1957)!

By the 1980s, people were using passive solar technology, thermal storage wall design, fixed pieces of glass, south-facing concrete walls – this is how I began building in Eldorado. We installed early versions of a solar hot water heater: an insulated metal box, with a black water tank inside and a glass cover. It circulated and provided 85-90% of the solar hot water for an Eldorado home. We put it on every house we built.

By the 1990s, we had the healthy house movement. This was due to the low energy homes that could be heated with the light bulb and the refrigerator. It worked, except they had terri-

ble condensation and mold problems, and carpets, boards and paints putting out formaldehyde. Hence, home syndrome.

People think energy efficiency is a new thing, but I've been talking about solar sustainability since the 1950s. I've been in the forefront of sustainable technology from the beginning.

Is it Really Green?

Just because something looks "green" doesn't mean it is. A great example is the compact fluorescent bulb. I thought, *We're going to cut energy consumption by switching to CFLs*, but it turns out they're toxic to create, even more toxic to dispose of, and there's probably no more hideous form of "green" than that. Was it sustainable? At the end of the day, it was just lost technology.

THE
PLATINUM
DOCK
by
KATE RUSSELL

earl
stud
lian

pets
Hend

but
Os.
blog

t me
t bul
by
toxic
n of
the



KATE RUSSELL PHOTOGRAPHY

The ultimate Leeds Platinum home with exterior concrete board panels, rammed earth (interior and exterior), reclaimed wood (interior and exterior), composite decking, energy saving lighting and heating, and many other features not visible to the eye.



GABRIELLA MARKS

Will and Jodi Prull planning a rammed earth and reclaimed wood interior.

ARCHITECT: ARKIN TILT ARCHITECTS, BERKELEY, CA
LANDSCAPING: DESIGN WITH NATURE

Another example is very tight, super-insulated homes, with very low air exchanges. Even though you use non-VOC paints, non-added formaldehyde particle board, you still don't want it to be completely tight. You need an energy recovery ventilator so that the house breathes constantly, pulls stale air out of kitchens and bathrooms, moves it through a heat exchanger, expels it out of the house, turns around, and breathes in clean, filtered air. It's like having the windows open without the dust. So it's about more than just a tight house, it has more to do with healthy air exchanges.

Think of the example of Canadian Durasol. It's basically a building block of concrete and leftover lumber waste. Great! Its green, its recycled! But...what about the fact that you're going to burn hundreds and hundreds of gallons of diesel to bring it from Ontario to New Mexico? Is that green?

You can build out of pumice, another option. But keep in mind that it comes from a very fragile landscape in New Mexico, and there's not enough of it to be sustainable on a large scale. A sustainable alternative would be to build with adobe or mud/clay/straw wall systems. All of these materials can be sourced locally, sometimes even on site. The key is to think about how you can resource your materials locally so you cut down on the carbon footprint transportation. Another great example is lumber that is FSC certified. These come from forests that are certified that they're planting enough to recover what they're cutting. Now these are the kind of practices that are truly sustainable. Ideally, we want to employ new building sciences and technologies that are low impact and low energy, and have less toxicity for the environment.

In my history of building in New Mexico for 42 years, there have been incredible leaps in energy production, solar, water harvesting, water conservation, low energy LED lighting, PV – it's been fabulous to see the development of building science, insulated materials, window treatments, and glazing that are



KATE RUSSELL PHOTOGRAPHY



KATE RUSSELL PHOTOGRAPHY

-VOC
 all
 y
 tly,
 rns
 g the
 an just
 ges.
 y a
 that
 of
 reen?
 in
 w
 on a
 with
 materials
 y is to
 y so
 another
 ne from
 recover
 es that
 building
 energy,
 ere
 water
 g, PV –
 cience,
 at are



KATE RUSSELL PHOTOGRAPHY

FOUNDING PARTNER PRULL CUSTOM BUILDERS

all more energy efficient and sustainable. And this is important on a large scale since buildings use 50% of the energy in the country.

Thinking Green in 2022

Santa Fe has a green build code in the city and the county which requires houses to have a certain HERS rating. They are getting very strict about this, and new houses with lots of glass doors and windows struggle to meet it. So we're looking at things like triple-paned glass, new films, and new gases between the panes.

We have increased the insulated values of our wall systems and our ceilings above the model energy code, so we do over-performance in these areas to increase HERS ratings. We also work to make homes as tight as possible but with energy recovery ventilators. Additionally, we put in standard water purification: the water goes through a sediment and carbon filter, then through a descaler or potassium softener.

Santa Fe's green code is great and means all homes built here are on the right track. But we go beyond that, identifying sustainably forested hardwood flooring products and heating and cooling equipment and appliances with the highest possible energy saving ratings. On almost every home, we install solar PV as well as plug-ins for electric vehicles.

We build a sustainable lifestyle into every home that we do. And we find that homeowners are truly mindful of the products they are buying and the homes they're building. It's heartening to see the manufacturers responding to these consumer desires. Since the beginning, Santa Fe has been a pioneer in sustainable building; we are lucky and proud to work here.

Sustainable features include (left to right): rain water harvesting cisterns, mud/clay/straw walls, soapstone wood-burning masonry heater, and bio-fuel or gas fireplaces.



GABRIELLA MARKS





PHOTO © ROBERT RE

04.

Sotheby's Market Update
Q4 2021

Q4 | 2021

Santa Fe

Market Update

presented by Britt Klein

Sotheby's
INTERNATIONAL REALTY

Special Article: *Meet the Builder* (page 8)



62 CALLE MI GUSTO
OFFERED AT \$1,345,000
MLS 202104617
(TO BE BUILT)

Meet the Builder



Will Prull and Jodi Vevoda, Prull Custom Builders
photo by Gabriella Marks

About Prull Custom Builders

Since 1981 Prull Custom Builders has specialized in building high-end, one of a kind, architect-designed custom homes in the Santa Fe community, consistently earning award recognition in both the AIA Excellence in Design Competitions and the Santa Fe Parade of Homes, including top honors with the most coveted Grand Hacienda Award in both 2018 and 2019.

Combining fine craftsmanship, with exceptional professional management skills and state-of-the-art technical ingenuity, our team of seasoned professionals provides decades of combined industry experience. Regardless of size and complexity, each project receives the same unparalleled attention, with on-site supervision and collaborative teamwork to ensure the highest standard of precision and accountability. Our undisputed track record of dependability and accuracy in execution is the cornerstone of our company's reputation and a source of pride for everyone associated with Prull Custom Builders.

Over the years, our projects have increased in scope and complexity, elevating our level of expertise across all design acumens, further demonstrating the breadth and depth of our extensive and varied body of work.

Contact Prull Custom Builders directly for a private consultation or visit their website:

<https://prull.com>

Prull Custom Builders: (Office) 505.438.8005

Prull Custom Builders - Questions & Answers

Q: What best defines who you are as a builder?

A: One main factor that differentiates us from other builders is the diversity and complexity of our projects. We have been recognized by the City of Santa Fe for our historic restoration work, and we have received numerous awards both from the Santa Fe Chapter of the American Institute of Architects and the Santa Fe Area Home Builders. We have built homes with a wide variety of building materials including frame/stucco, adobe, straw bale, pumice-crete, ICF block, stone, steel, and rammed earth. Additionally we have built a large number of traditional Pueblo Revival, Territorial and pitched roof Northern New Mexico style homes. However we are best known for our Santa Fe Modern, Transitional, and Contemporary work. Many of these styles of homes utilize technically challenging foundations, structural steel and poured concrete work. These homes require a high level of project management with considerable planning, coordination and precision, so that the various intersecting materials come together in a clean and harmonious manner.

Q: What do you most enjoy about the building process?

A: Building is a creative and collaborative endeavor. The process of working with an architect and an owner in the creation of their vision is hugely rewarding in itself, both in planning and in construction. Although, the greatest enjoyment is when our clients have moved into the houses we have built, filled with their art and cherished possessions, transitioning the newly completed space into a warm and inviting home. There is immense pleasure for all of us when we are eventually standing on the expansive portals, sharing a bottle of wine, and watching the sunset over our beautiful New Mexico landscape.

Q: What trends are you currently seeing with your clients?

A: Stylistically the predominance of homes are trending more toward a contemporary expression of the traditional Pueblo Revival style. The features of these homes include a more open concept layout as opposed to smaller individual rooms; Larger amounts of glass windows and sliding doors to take advantage of the views and expansive outdoor living spaces. Kitchens and breakfast rooms, as well as spacious master bedroom and bathroom suites are still very important to our clients. There is often a separate media room and office/den. Our average home size is 3,500 to 4,500 heated square foot area, however we have a few at 3,000 and some between 7,000 and 8,000 square feet. Usually a finished three car garage, with additional storage closets and electronic vehicle charging outlet, in addition to large portals are part of the program. Floor radiant heating/cooling is gaining in popularity versus traditional forced air cooling.

Questions & Answers - continued

Q: What are the most important factors someone should consider when selecting a builder?

A: There are several important factors when considering this selection. First would be to narrow the field or prospective candidates to those who have been well vetted. Meaning these builders should have a successful body of work similar to what one wants to build. They should have a sound reputation without complaints filed at Construction Industries Division and without a history of lawsuits. They should be able to provide business references of current and past clients, and those who they work with including architects, subcontractors and vendors, bankers, realtors etc. Once the field has been narrowed by this process to a few select builders, having in-person interviews is critical. During these interviews the builder should be able to explain their business practices and methods of construction management and accounting. Eventually the selection should include considering who they feel they best communicate with and have a sense of trust in and believe that this company can and will deliver the home they want to have built. A home investment is normally the largest investment an individual and/or couple will make.



Sotheby's

INTERNATIONAL REALTY

326 GRANT AVENUE
SANTA FE, NM 87501

Quick Stats & Awards

We have built over a hundred homes over the past forty years throughout northern New Mexico.

Currently, we have eight homes under construction.

We have won over a hundred awards from various organizations for remodelling, historic renovations and new construction.

We have been featured in numerous local and national publications and coffee table books.



RENDERING FOR 62 CALLE MI GUSTO (TO BE BUILT)

BK | **BRITT KLEIN**
Real Estate

britt.klein@sothebys.realty
www.brittklein.com
sothebysrealty.com/eng/associate/180-a-1200-66674504/britt-klein
505.500.5184 (anytime)

© MMXVIII Sotheby's International Realty, Inc. All Rights Reserved. This material is based upon information which we consider reliable but because it has been supplied by third parties, we cannot represent that it is accurate or complete and it should not be relied upon as such. This offering is subject to errors, omissions, changes including price or withdrawal without notice. If your property is listed with a real estate broker, please disregard. It is not our intention to solicit the offerings of other real estate brokers. We are happy to work with them and cooperate fully. Sotheby's International Realty and the Sotheby's International Realty logo are registered (or unregistered) service marks used with permission. Operated by Sotheby's International Realty, Inc. Real estate agents affiliated with Sotheby's International Realty, Inc. are independent contractor sales associates and are not employees of Sotheby's International Realty, Inc. Equal housing opportunity.

05.

Build Magazine
Issue 2021



BM

BUILD MAGAZINE

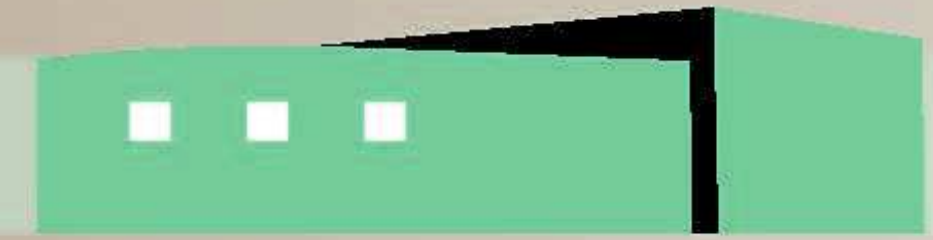
S A N T A F E



Masters of Contemporary Craftsmanship



PRULL



C U S T O M
B U I L D E R S



prull.com • 505.438.8005



ON THE COVER

Marrying Mid-Century Modern with Mother Nature



On an early morning walk in Las Campanas, Will Prull discovered a lot, seated against the Bureau of Land Management fence line. Behind that fence, 68,000 acres of protected high desert boast views for miles, and nary a house to mar the horizon.

Prull and his business partner and wife, Jodi Vevoda, run Prull Custom Builders. Prull has been building high-end custom homes for 40 years. In that time, they have fostered deep partnerships with industry talent, both locally and outside of Santa Fe, and are known for well-executed design and detail. Building their own home meant designing a special space to showcase to potential new clients, as well as to love living in themselves.

Lot purchased, they called on architect Craig Hoopes, whose company, Hoopes + Associates Architects, has partnered with Prull on projects for over 25 years, many of them award-winning. Their familiarity lent a depth and vernacular to the design process. Hoopes sketched some iterations of an idea. Vevoda and Prull loved the final proposal—a mid-century modern framework with interlaced indoor/outdoor spaces and a touch of Frank Lloyd Wright in its soul. While Prull, as a company, is well versed in a variety of styles—Territorial, Pueblo Revival, modern



© ROBERT RECK

and contemporary – mid-century modern is the style that reflects the couple personally; vibrant, stylish and entirely approachable.

The home was designed as a backdrop for both the manmade artwork within and nature's scenery without. They carefully sited it to celebrate views from each room, but also strategized around the couple's art collection. "We laid out the predominant art pieces in a virtual manner," says Prull, referring to the pre-planned place for each piece. "We put a lot of thought into it before we built it," agrees Vevoda. "Art is such a focal point in this house. It set the tone for the design."

A nod to that mid-century modern theme, three roof lines rise in unison, one each over the main area, the master suite and the guest suite. Alaskan yellow cedar in

the ceiling runs in the direction of the slope, elongating the visual plane. "Visually and energetically these roofs rise out to the open spaces," says Prull.

For the indoor-outdoor crossover, the exterior walls step forward and back, creating layers between nature and the inside. "It blurs the distinctions between the two and interplays them," says Prull. One can look through a succession of windows, to open and enclosed spaces, in series; a construct that melts the division between the two. Landscape architect Solange Serquis, of Serquis + Associates Landscape Architects was tasked with echoing that construct outdoors. She has a distinct talent for blurring the line between constructed landscape and the natural environment. "She designs not only with the vernacular of the home but also with what lies beyond," says Vevoda.



While open concept floorplans are popular, this home demonstrates a fresh take by riffing on a tenet of Frank Lloyd Wright. Wright used the concept of compression and expansion to impart a feeling of change when entering a room. Each room or hallway opens to another imbuing a sense of surprise. It's always unfolding, room to room. This home is compartmentalized, but not into traditional divisions. Stand in any of the well-defined rooms and it still feels huge and airy, with a constant visual continuation to the space beyond. Around every corner is a different view. "There is always a visual connection to the rest of the house," says Prull.

This characteristic of subtlety is a well-known Prull skill. "People often respond positively to a space without being able to articulate why," he says. "They're responding to the synergy of spatial relationships, good proportion, and the accurate intersection of materials, tone, texture and color. In addition to good architecture, you have to have proper material selections and proper execution."

Chandler Prewitt Design executed the interior design, mindfully playing up the rectilinear, mid-century modern theme, but also softening it in places. Prewitt chose the pillowy dining room chandelier, a centerpiece in its own right and another of those visual surprises. "This house is simple, elegant and harmonious," says Vevoda of Prewitt's work.



Vevoda and Prull love their home, as an extension of not only themselves, but their work. Says Vevoda, "It's a reflection of our sense of place and time." **BM**





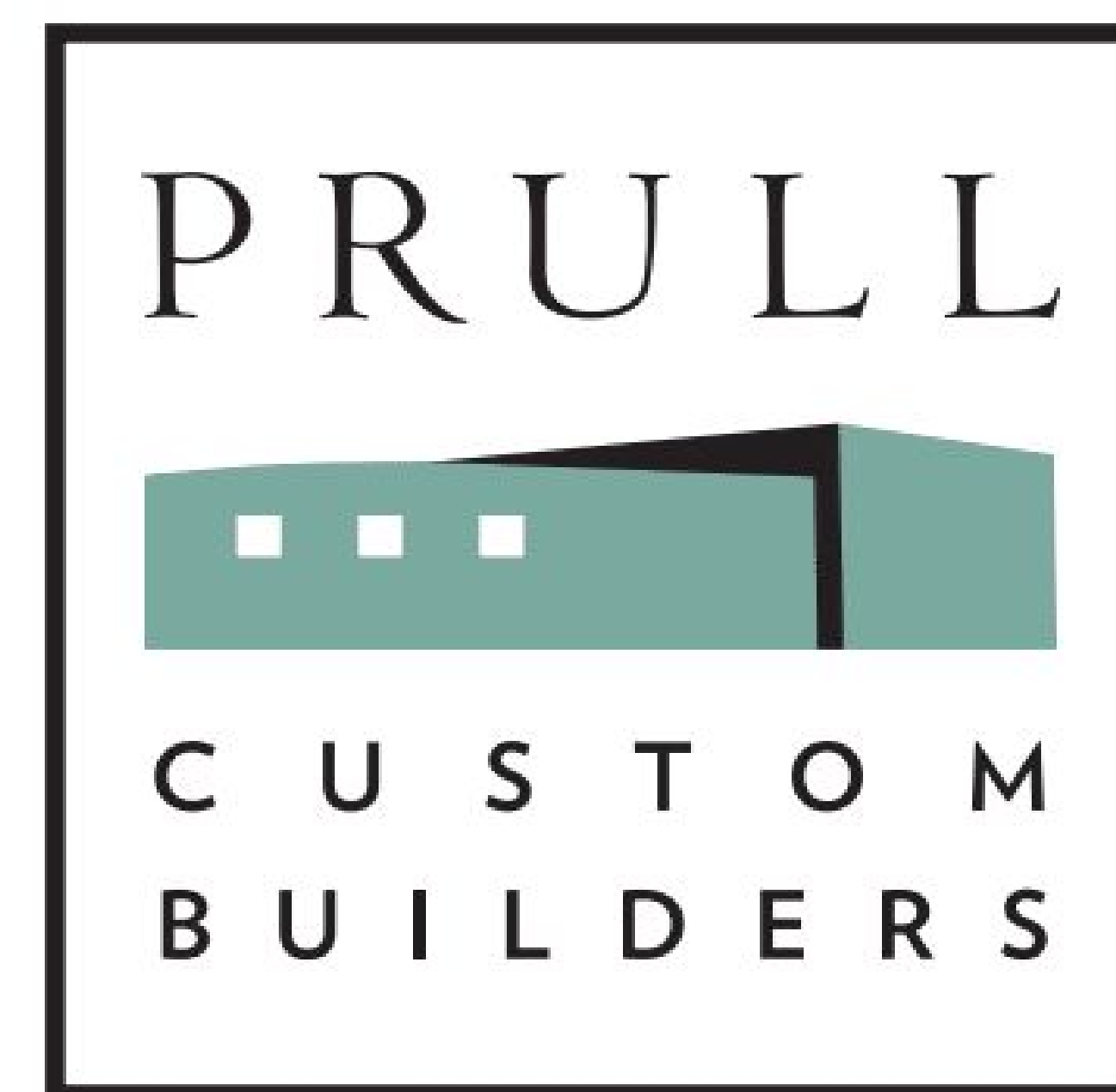
© ROBERT RECK



PHOTO BY PETER OGILVIE



© ROBERT RECK



3204 CALLE MARIE
SANTA FE, NM 87507
505.438.8005
PRULL.COM

Since 1981 Prull Custom Builders has specialized in building high-end, one-of-a-kind, architect-designed custom homes in the Santa Fe community, consistently earning award recognition in both the AIA Excellence in Design Competitions and the Santa Fe Parade of Homes, including top honors with the most coveted Grand Hacienda Award in both 2018 and 2019.

Combining fine craftsmanship with exceptional professional management skills and state-of-the-art technical ingenuity, our team of seasoned professionals provides decades of combined industry experience. Regardless of size and complexity, each project receives the same unparalleled attention, with on-site supervision and collaborative teamwork to ensure the highest standard of precision and accountability. Our undisputed track record of dependability and accuracy in execution is the cornerstone of our company's reputation and a source of pride for everyone associated with Prull Custom Builders.

“Prull Custom Builders have long been known as one of the exceptional general contractors in Santa Fe and my collaborations with them have proven that to be the case. Their team provides the highest level of customer service and they care deeply about ethically serving their clients.”

- Archaeo Architects



“Best building experience we have ever had. No detail was overlooked. Easy and professional staff. Beautiful home. Well thought out and a joy to live in.”

- Rick and Pam Nist



Over the years, our projects have increased in scope and complexity, elevating our level of expertise across all design acumens, further demonstrating the breadth and depth of our extensive and varied body of work.

As we celebrate our 40th year in business, first and foremost, we would like to salute our talented team of architect partners. Over time our team has grown in both number and influence, spanning the country and bringing an exceptional body of design work to the forefront. From our decades-long relationships with locally celebrated architects Craig Hoopes, Hoopes + Associates Architects; Jon Dick, Archaeo Architects; Eric Enfield, Architectural Alliance; Lorn Tryk, Lorn Tryk Architects; Dale Zinn, Dale F. Zinn & Associates; and Mark Rohde, RMKM Architecture, PC to more recent long-distance collaboration with Kilbane Architecture, Inc./Scottsdale; Far + Dang/ Dallas; Bohlin Cywinski Jackson/San Francisco; and Arkin Tilt Architects/Berkeley, CA. The list continues to grow, bringing fresh architectural perspective and intrigue to our landscape.



3204 CALLE MARIE, SANTA FE, NM 87507
505.438.8005 | PRULL.COM



© DANIEL NADELBACH, NADELBACHPHOTO.COM



KATE RUSSELL PHOTO



KATE RUSSELL PHOTO



We extend our gratitude to all of our build partners, including architects, interior designers, landscape architects and our entire community of exceptional craftsman, artisans and tradesman. Special recognition to Prull's highly skilled team of supervisors and crew, who represent our work from start to finish, inspired by the challenges and committed to its excellence.

We honor this rich and distinguished history and look forward to its continued evolution in the years ahead.

“I had the privilege to work with Will Prull and Jodi Vevoda. It was a fantastic experience with close collaboration and feedback. The end result far exceeded all our expectations. Looking forward to many more projects with the Prull team in the future!”

- Chandler Prewitt Interior Design



3204 CALLE MARIE, SANTA FE, NM 87507
505.438.8005 | PRULL.COM

06.

Build Magazine
Issue 2022



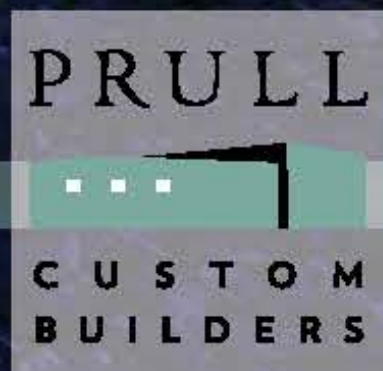


Masters of Contemporary Design & Craftsmanship

Photo: © Daniel Nadelbach



hoopesarchitects.com • 505.986.1010



prull.com • 505.438.8005 •   

Sheltered Serenity in the Galisteo Basin



ALL PHOTOS BY DANIEL NADELBACH PHOTOGRAPHY

Nestled on the edge of the expansive Galisteo Basin lies a contemporary estate so thoughtfully designed that it feels as if it grew from the roots of the surrounding piñon and juniper forest to become one with the landscape. This seamless feeling, converging contemporary craftsmanship with the centuries-old basin, is the work of Prull Custom Builders and Hoopes + Associates Architects.

Partnering for over 25 years, Will Prull, and Craig Hoopes have cultivated a rich collaboration. Known separately as Santa Fe's premier custom builder and top architect design firm, their mutual love of artisans and contemporary style led the dynamic duo to clients Ken and Karen Bunkowski.

The Bunkowski's carefully selected Prull and Hoopes to bring to life their dream of new-age New Mexico living because of their instant connection to the project. This timeless home took nine months to design and over a year of active construction to finish. In the end, the couple had a masterfully crafted estate, "it is a calm space, which blends in perfectly with the surrounding landscape thanks to



its deliberate design and clean workmanship," says Jodi Vevoda, Co-Owner, Prull Custom Builders. Built around an interior courtyard that helps fend off the Santa Fe wind, the residence features abundant natural light, expansive basin views, and a layout so balanced that Ken, Karen, and their guests have the freedom to choose the comfort of privacy one minute and camaraderie the next. The entire house is modulated around a three-sided fireplace, and a spacious kitchen harmoniously connects to the living and dining rooms. Like many area homes, the two primary suite wings are located on either side of the house for optimal seclusion.

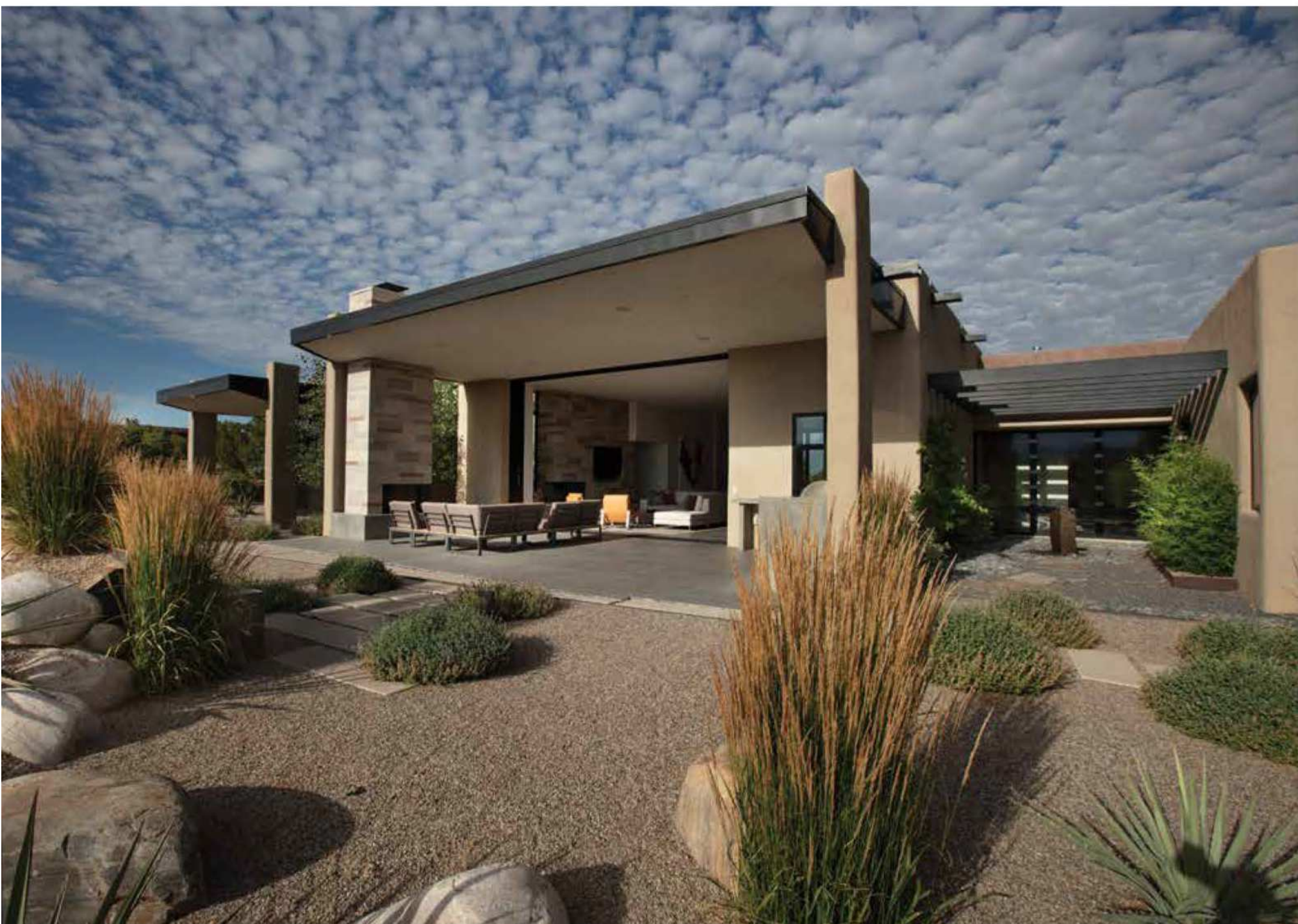


At the forefront of the design is an appreciation for the environment. This home evokes a feeling of being outside even when settled comfortably within, “we worked very hard to blur the line between the inside and outside, yet all the while making everyone feel sheltered,” described Hoopes. “This feeling of openness and freedom immediately strikes you when you descend upon the home, and even more so when you walk through it and understand how it opens up to the natural landscape.”

Artisanal materials and refined finishes create an air of sleek sophistication throughout, from the custom Cantera entry door to the European Reynaers Aluminum floor-to-ceiling windows, brown granite countertops, and Italian Poliform custom cabinetry, the interior is every bit as exquisite as the exterior. From the great room, the stunning floor-to-ceiling windows function as pocket doors, and transitional indoor-outdoor porcelain floors lead the way to the courtyard and the property’s lush landscaping. Outside, a detached casita is adjacent to the main house, and a nearby bocce ball court, labyrinth, and 10,000 acres beckon to be explored. **EN**



ALL PHOTOS BY DANIEL NADELBACH PHOTOGRAPHY



ALL PHOTOS BY KATE RUSSELL

We cannot say enough good things about Will and his team. His integrity, knowledge, solid reputation and the beautiful homes he has built throughout the past decades in Santa Fe are testimony enough.

- Susan Vinci-Lucero



3204 Calle Marie
Santa Fe, NM 87507
505.438.8005
prull.com



Over the years, our projects have increased in scope and complexity, elevating our level of expertise across all design acumens, further demonstrating the breadth and depth of our extensive and varied body of work. Our partnership with our talented team of architects, interior designers, landscape architects, and artisans in additon to our highly skilled team of supervisors and crew work in tandem to create spectacular homes in Northern New Mexico.

Since 1981, PruLL Custom Builders has specialized in building high-end, one-of-a-kind, architect-designed custom homes in the Santa Fe community, consistently earning award recognition in both the AIA Excellence in Design Competitions and the Santa Fe Parade of Homes, including top honors with the most coveted Grand Hacienda Award in both 2018 and 2019.

Combining fine craftsmanship with exceptional professional management skills and state-of-the-art technical ingenuity, our team of seasoned professionals provides decades of combined industry experience. Regardless of size and complexity, each project receives the same unparalleled attention, with on-site supervision and collaborative teamwork to ensure the highest standard of precision and accountability. Our undisputed track record of dependability and accuracy in execution is the cornerstone of our company's reputation and a source of pride for everyone associated with PruLL Custom Builders.



07.

Haciendas Resource Guide
Guide 2019

Hacienda

Home Building Santa Fe Style

A P A R A D E O F H O M E S



Resource Guide 2019

Parade of Homes
August 9-11 & 16-18

Santa Fe Area Home Builders Association
sfahba.com

NEW!
Interactive
DIGITAL
Parade map
sfahba.com

Prull Custom Builders

In the living room, the views are never impeded thanks to low-height furnishings and lighting. Above the steel-clad fireplace a piece of art cleverly hides an 85-inch TV.



Above: Amid clean, xeric landscaping, a soothing water feature adds aural and visual interest.

"It's one of the most contemporary homes approved to be built in Las Campanas," says Prull. "That translated into it being a technically challenging project, structurally."

The grand *portal* recalls The Santa Fe Opera house, exposing the stars through the protective roof—truly an aria in Prull's canon of custom homes.

The five-bedroom, 5,000-square-foot residence sits on a three-acre knoll. But it doesn't perch; rather, it follows the contours of the land, not forcing itself into the landscape, but sheltering in. It's a real design feat—for its scale, its harmony, and its meaning.

Laid out in a C-shape, the house represents an embrace, with the master suite in one arm, the guest rooms in the other, and the gathering spaces at the heart of the home. "They wanted the home to feel like arms embracing a family," says Vevoda. "It's a hug." A simple sentiment, but a complex design.

Compounding the horizontal curve of the home is the vertical

stepping down of that curve as it follows the slope of the land. "The house has a number of different expressions about it," says Prull. "It unfolds as you move through it." Windowed vignettes mark the stepped hallway, marrying Serquis's natural yet artful landscape design outside with Rau's upscale interior work.



Even the master bathroom brings nature inside via sliding doors that open to a private outdoor shower.

With raised bedstands and beautiful backlighting and underlighting, the entire master bedroom seems to float.



With its soaring ceilings and sweeping vistas, the grand *portal* recalls The Santa Fe Opera house, exposing the stars through the protective roof—truly an aria in Prull's canon of custom homes. Indoors and out, every sightline purposefully frames a view while protecting privacy and lending this massive space some compartmentalization of living areas.

"It's welcoming and expansive," says Prull, noting that nothing was designed unilaterally; it was entirely a team effort, thanks in large part to the homeowners, who, as he says, "really enjoyed developing creative ideas with the architects and designers."

A shared dialogue among seasoned professionals, combined with the support of creatively minded clients, made this extraordinary project a surefire win. **H**

Prull Custom Builders, prull.com

2018 Grand Hacienda

The lines between indoor and outdoor living are deliberately blurred in Prull Custom Builders' Grand Hacienda residence. Multiple *portales* connect to interior spaces through floor-to-ceiling windows and sliding glass doors.



Art + Artistry

A contemporary high desert masterpiece earns Prull Custom Builders their first Grand Hacienda

By Jessa Cast Photographs by Robert Reck

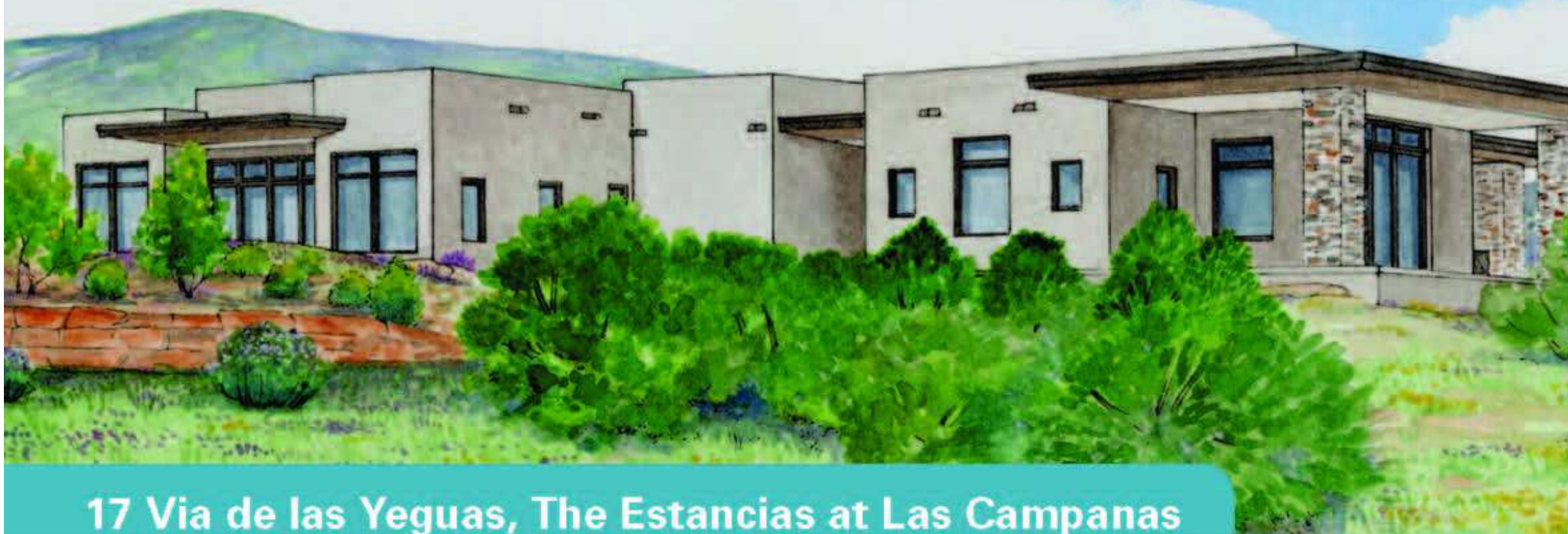
Sited on a rise in Las Campanas with grand, sweeping views on almost every side, the Grand Hacienda winner of the 2018 Haciendas—A Parade of Homes is not only a standout work of art, but also a surprisingly natural part of its high desert landscape. A master work executed by Prull Custom Builders and a team of design professionals, it showcases not only the scenery it celebrates, but the skills of the artists who constructed it.

Prull, founded almost 40 years ago and now owned by spouses Will Prull and Jodi Vevoda, exclusively builds custom-designed architectural projects, collaborating with talented partners to create each home. This award-winning project's team included architect Craig Hoopes of Hoopes + Associates; interior designer Paul Rau of Paul Rau Interiors; and landscape architect Solange Serquis of Serquis + Associates.

Even with such an impressive team, this house is truly special, as visually dynamic as it is soulful. Side-stepping the common Southwestern vernacular, its contemporary style bucks convention while remaining . . . well, Santa Fean. It's contemporary, with an organic, industrial flair, and just a touch of the Southwest.

Right, top: A pivot entry door opens to dramatic views at the base of a C-shaped design, with guest sleeping areas and the main living areas and master suite on opposite ends. Right, bottom: Though the floor plan is open, the dining area is subtly separated from the kitchen and living room by see-through and floating cabinetry.





17 Via de las Yeguas, The Estancias at Las Campanas

A Work of Modern Art

Pull Custom Builders follows last year's Grand Hacienda win with an exceptional home in the Contemporary Pueblo Revival style, defined by a modern use of metals, stone, and rectilinear architecture. Many local craftsmen contributed to its finishes and details, from the custom, rift oak cabinetry to the interior and exterior steel work. Don't miss the kitchen's steel backsplash and cabinetry fascia, or the steel-wrapped outdoor fireplace cleverly built into a stone-clad column. Though bold, masculine finishes, they are surprising, soft touches.

Built for comfortable living and gracious entertaining, the home features many beautiful details and finishes, including minimalist staggered book shelves in the family/media room; recessed art niches; wood and large-format porcelain flooring; floating dressers in the master bedroom and floating vanities in the master bath; curved archways; and floor-to-ceiling windows and multi-slide glass doors. No fewer than four outdoor *portales* adorned with three water features facilitate indoor/outdoor living and capture breathtaking Sangre and Jemez views from every angle.

About the builder: Since 1981, **Pull Custom Builders** has specialized in building high end, architect-designed custom homes, winning Citation and Merit Awards in the AIA Excellence in Design competition. Santa Fe Parade of Homes awards include the coveted 2018 Grand Hacienda and a host of "Bests" for Craftsmanship,



Design, Kitchen, Outdoor Living Space, and Master Suite. Pull also received the Heritage Preservation Award for the historic Manderfield Project.



Jodi Vevoda
& Will Pull

HOME FEATURES

- Spectacular Jemez and Sangre view from an elevated vantage point
- Beautiful outdoor spaces with four *portales* and three water features
- Contemporary use of metals and rectilinear architecture
- Artistic wood work and metal work

price: N/A

lot size: 1.73 acres

heated sq. ft.: 4,614

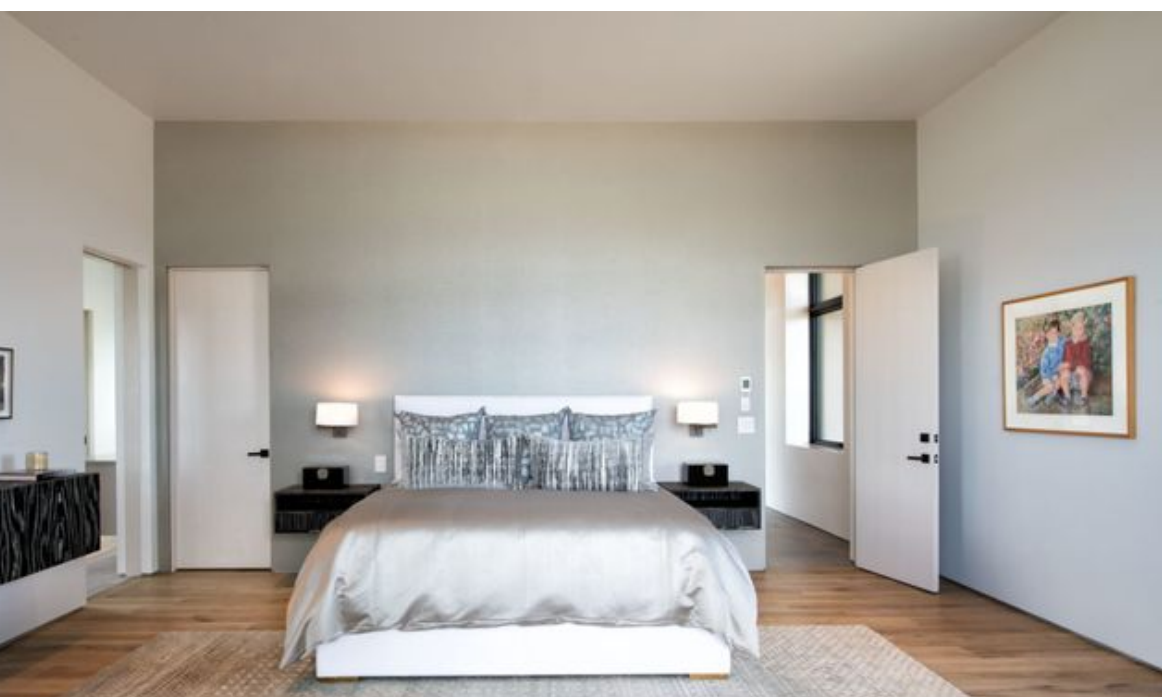
total sq. ft.: 8,177

architect: Lorn Tryk Architects

interior designer: Chandler Prewitt Design

landscape architect: Serquis + Associates

Driving Directions: From the downtown area, take US 84 north/285 north to 599 south. From 599, take the Camino La Tierra exit, turning right onto Camino La Tierra. Proceed 3.3 miles until the road forks by the bell tower and veer left, staying on Camino La Tierra, and continue for approximately 3.0 miles. Turn left into the gate at Via de las Yeguas. The house is at the end of the cul de sac on the right.



08.

Haciendas Resource Guide
Guide 2020



Haciendas

Home Building Santa Fe Style

A PARADE OF HOMES

2020 RESOURCE GUIDE

Virtual Parade of Homes
Begins October 16

santafeparadeofhomes.com

Santa Fe Area Home Builders Association



AN ARTFUL BALANCE

Contemporary Pueblo Revival lines elevate the 2019 Grand Hacienda award winner

By Jessa Cast

In 2019, for the second year in a row, Will Prull and Jodi Vevoda, spouses and partner/owners of Prull Custom Builders, have won the Santa Fe Area Home Builders Grand Hacienda award by once again demonstrating their particular brand of synergistic art. While they credit teamwork with the stunning result, a personal connection may be partially responsible for the magic this time.

Prull and Vevoda had purchased a plot of land for themselves in Las Campanas. When a client fell in love with it, it didn't remain theirs for long. "We have a special place in our hearts for this project because originally we purchased the lot as a potential place for our own home," says Prull. "We were happy to find clients that we resonated with, that we wanted to do something special for."

The homeowners selected Lorn Tryk, principal architect of Lorn Tryk Architects PC, as their partner for his vision



and his clear understanding of their taste. From there, they assembled a crack-shot team of seasoned and inspired professionals, including interior designer Chandler Prewitt of Chandler Prewitt Design and landscape architect Solange Serquis of Serquis + Associates. "Lorn immediately created a team atmosphere and we all marched off in lockstep together," says Prull. He believes that because the team was created early on and was mutually supportive, the richness of the project deepened through each stage of development.

The result is a scrupulously contemporary, 4,600-square-foot interior artfully balanced with an expansive, modernized, Pueblo-revival exterior. And, oh, the views. The lot bears exquisite sightlines to both the Jemez and Sangre de Cristo mountains, miles in the distance, so massive swaths of glass in every room of this four-bedroom home offer long-range gazing — and the perfect comfort with which to enjoy it. The high visibility of the surrounding desert scape makes nature a thematic element of the interior ambiance, softening the line between inside and outside.

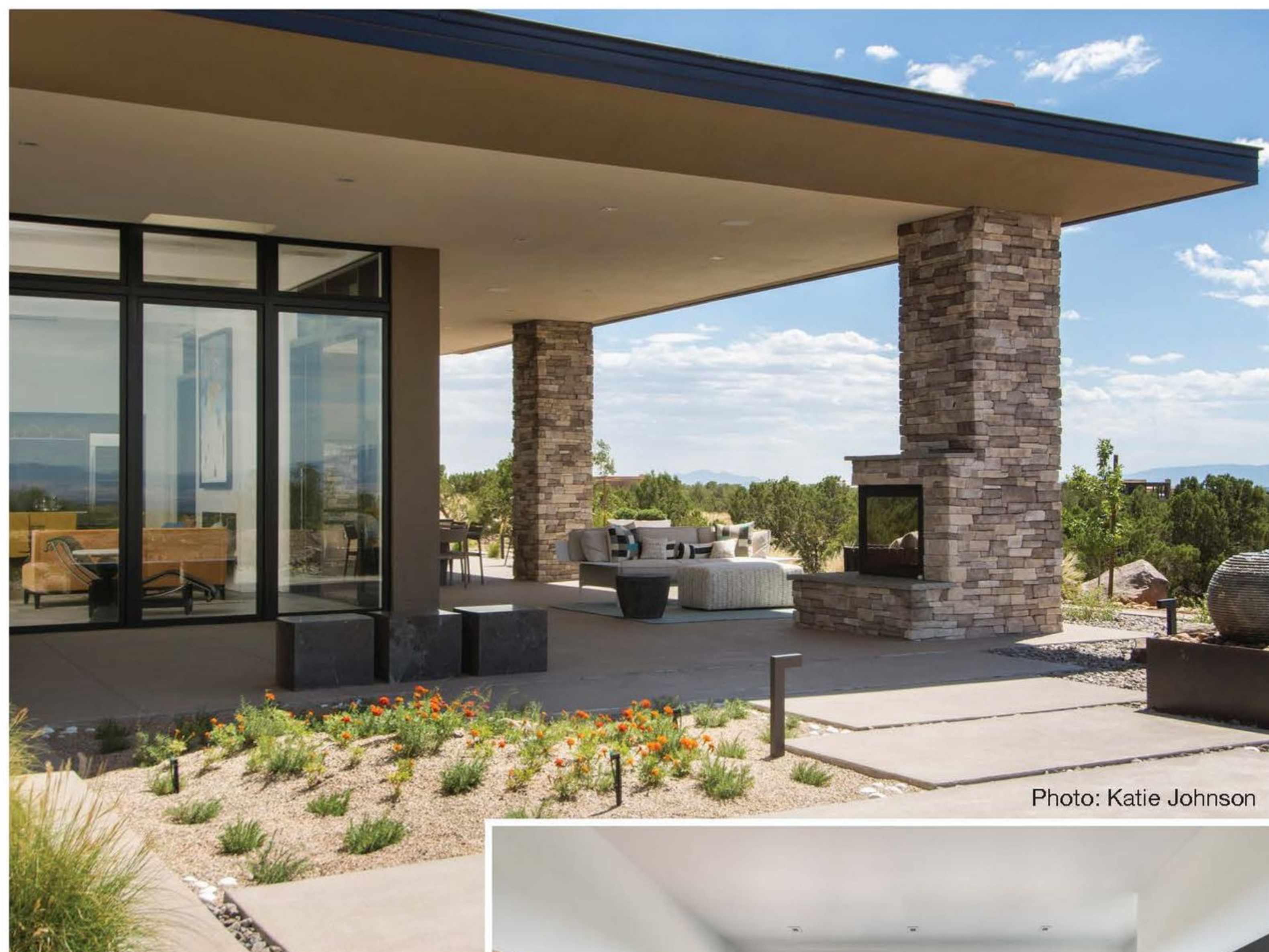


Photo: Katie Johnson



Photo: Peter Ogilvie

Upon entering, a welcoming transition through the courtyard and art-gallery hallway beckons to the living room beyond. Until that point, the sheer extent of the jaw-dropping views isn't obvious; it's planned as a surprise in that first step past the hall. "The second you step into the living room the house just explodes in front of you with fantastic views," says Prull. "It takes your breath away. This unfolding — it's a wonderful architectural element."

Moving through the home is captivating. From coffered ceilings to harmonious furnishings, all the ingredients marry beautifully. The rooms feel lavish without being grandiose. Hidden LED fixtures subtly wash art vignettes with light. Reglets — inset metal strips at the wall bases — frame and "float" the walls while protecting them from wet mops. Custom wood cabinetry executed by Baglione Custom Woodworks deftly complements finishes of porcelain, plaster and a vast amount of surprisingly cozy hot-rolled steel produced by Gabe Rippel. "The use of steel in the kitchen... it's really quite extraordinary," says Vevoda. Steel runs counter to ceiling in the kitchen and counter to floor under the bar, as well as echoing in the dining and living rooms, and in the courtyard gate designed by Prewitt. "You would normally think steel would have a cold effect, but here it was quite the opposite," says Vevoda. "It warmed up the space and pulled it together."

Outdoor portals are deep enough to be useful in sun or rain, offering seating in several areas to make optimal use of different times of day. Of course, the home is green, fea-

turing floor-radiated heating and cooling, an ERV (energy recovery ventilator) system and humidification. Smart-home features, all operable remotely, are useful and invisible: the home's nervous system is high-tech, but doesn't disrupt the aesthetic. Serquis, who has worked on a number of Prull homes, created a landscape that is both structured and natural, so that it respects and blends with the desert, celebrating the environs.

Perceptively constructed to combine a contemporary appeal with a nod to the historic Southwest, the team's joint efforts mesh elegance and verve for a singular effect. With so much art and artistry, even with such stiff competition, the house was a sure win for the 2019 Grand Hacienda award. "It's spacious, it's comfortable, it has human scale and a wonderful collection of finishes" says Prull. "The house is a knockout, I love it."

prull.com/505-438-8005



Photo: Katie Johnson







Photo: Daniel Nadelbach ©

7

Galisteo Basin, Lamy NM

Classic Contemporary

This gorgeous home, situated in the Commonwealth subdivision of the Galisteo Basin Preserve, was designed to accommodate the beautiful but sometimes harsh weather of the basin. Built around an inner courtyard, buffered to the somewhat inclement conditions, it allows for seasonal year-round enjoyment. The Reynaers Aluminum floor-to-ceiling windows imported from Ireland appear as glassy walls that disappear into pocketing doors, ensuring magnificent wraparound views.

The grand entrance, encased with an oversized custom steel and brass entry door with glass side panel and transom, opens up to soaring illuminated ceilings. Porcelain tile floors seamlessly transition between interior/exterior. An impressive three-sided Ortol fireplace provides warmth and coziness. The excellence of the materials and exclusive nature of the finishes are expressed in a tailored and sophisticated manner.

Two master suite wings spin off the main great room. The state-of-the-art kitchen is sleek and spacious with Elegant Brown granite countertops, luxury modern Italian Poliform custom cabinets and high-end Gaggenau appliances. The home has a highly efficient engineered heating/cooling system with radiant heat floors and Unico air conditioning.

A detached guest casita/art studio sits adjacent to the main house on a lushly landscaped protected courtyard. The exterior landscaping is organically integrated into the natural terrain, incorporating a bocce ball court, walking labyrinth, sculptures and water features.

About the builder: Since 1981, Prull Custom Builders has specialized in building high-end, one-of-a-kind, architect-designed custom homes in the Santa Fe community, earning consistent award recognition in both the AIA Excellence in Design competitions and the Santa Fe Parade of Homes, including the Grand Hacienda Award in both 2018 and 2019.



Combining fine craftsmanship with exceptional professional management skills and state-of-the-art technical ingenuity, our team of seasoned professionals provides decades of combined industry experience. Regardless of size and complexity, each project receives the same unparalleled attention, with on-site supervision and collaborative teamwork to ensure the highest standard of precision and accountability.



Pictured: William 'Will' Prull & Jodi Vevoda

Visit: prull.com

HOME FEATURES

- Spectacular mountain/basin wrap-around views
- Contemporary use of steel, with rectilinear architecture detailing
- Dramatic state-of-the-art kitchen with high-end appliances, materials and finishes
- Seamless indoor/outdoor living like you have never experienced

Lot Size: 14.16 acres

Heated Square Feet: 4,332

Total Square Feet.: 7,875

Architect: Hoopes + Associates Architects

Interior Designer: Paul Rau Interiors

Landscape Architect: Serquis + Associates Landscape Architecture



Photo: Daniel Nadelbach ©

The Estancias, Las Campanas

Mid-Century Modern

Bordering on 68,000 unobstructed acres belonging to the Bureau of Land Management, this exquisite home commands dramatic mountain and prairie views from the majestic Sangre de Cristos to the east to the extensive stretches of the Jemez/Badlands to the west. Designed in the mid-century modern vernacular, the structure presents with clean rectilinear lines, sloping roofs and organic use of materials, incorporating steel, stone and stucco deeply etched with endless sheets of glass that provide a seamless indoor/outdoor flow.

Distinguishing features showcase three sloping roofs piercing the glass with 3-inch tongue and groove Alaskan yellow cedar, bringing one continuous ceiling plane inside/out. In sharp contrast, highly polished concrete micro-slab floors glisten softly under the LED recessed lighting. Cantilevered portals with stepped metal fascia frame out the three sections of the home as they wrap around the bold enveloping walls.

The natural use of African teak and walnut wood in both the custom interior doors and cabinetry brings warmth. Most spectacular to the home's design and connectivity, and prominently positioned in three key passageways, are a floor-to-ceiling glass atrium luxuriating in natural light between the kitchen and family room; a sleek 10-foot stretch of glass hallway connecting the master and main living wings; and a massive 600-pound cold-rolled plate-steel entry door with patinaed oversized brass handle, all artistically positioned for a harmonious flow.

About the builder: Since 1981, Prull Custom Builders has specialized in building high-end, one-of-a-kind, architect-designed custom homes in the Santa Fe community, earning consistent award recognition in both the AIA Excellence in Design competitions and the Santa Fe Parade of Homes, including the Grand Hacienda Award in both 2018 and 2019.



Combining fine craftsmanship with exceptional professional management skills and state-of-the-art technical ingenuity, our team of seasoned professionals provides decades of combined industry experience. Regardless of size and complexity, each project receives the same unparalleled attention, with on-site supervision and collaborative teamwork to ensure the highest standard of precision and accountability.



Visit: prull.com

Pictured: William 'Will' Prull & Jodi Vevoda

HOME FEATURES

- Bold and sleek, utilizing steel, stone, stucco and concrete
- Warm neutral palette, with natural wood ceilings and cabinetry
- Three rising structural planes, shielded in glass, seamlessly transitioning indoors/out
- Authentic mid-century modern design: Form follows function

Lot Size: 4.0 acres

Heated Square Feet: 4,353

Total Square Feet: 5,557

Architect: Hoopes + Associates Architects

Interior Designer: Chandler Prewitt
Design

Landscape Architect: Serquis +
Associates Landscape Architecture

09.

Western Art & Architecture
Apr/May 2018

WESTERN ART & Architecture

From Cowboy to Contemporary

Emily Mason: In Celebration of Color
Shelley Reed: Enlightenment in Monochrome
Inspired by Architecture: T.C. Boyle's Frank Lloyd Wright home



plus:

Perspective: The Gentle Rebel, Olive Rush [1873 – 1966]
An Artistic Retreat at Home in Crested Butte, Colorado
Contemporary Comfort in Santa Fe, New Mexico



ANGLES AND TRAPEZOIDS

Amid the High-Desert Skyline

Complexity highlights a comfortable, contemporary home in Santa Fe, New Mexico

Written by Johnny D. Boggs

Photography by Daniel Nadelbach



ARCHITECTURE | Evanson Studios
BUILDER | Prull Custom Builders
LANDSCAPE DESIGN | Serquis + Associates Landscape Architecture

Thick stucco walls support 10-foot-high windows, allowing light patterns to spill from the living room. Inset: A floor-to-ceiling wall of oversized Spanish porcelain is the perfect background for furniture designed by architect and homeowner James Evanson. The great room opens to views of Santa Fe's two renowned mountain ranges.





Walking up to architects Lisa and James Evanson's home in Santa Fe, New Mexico, a visitor's first thought might be: This place is huge.

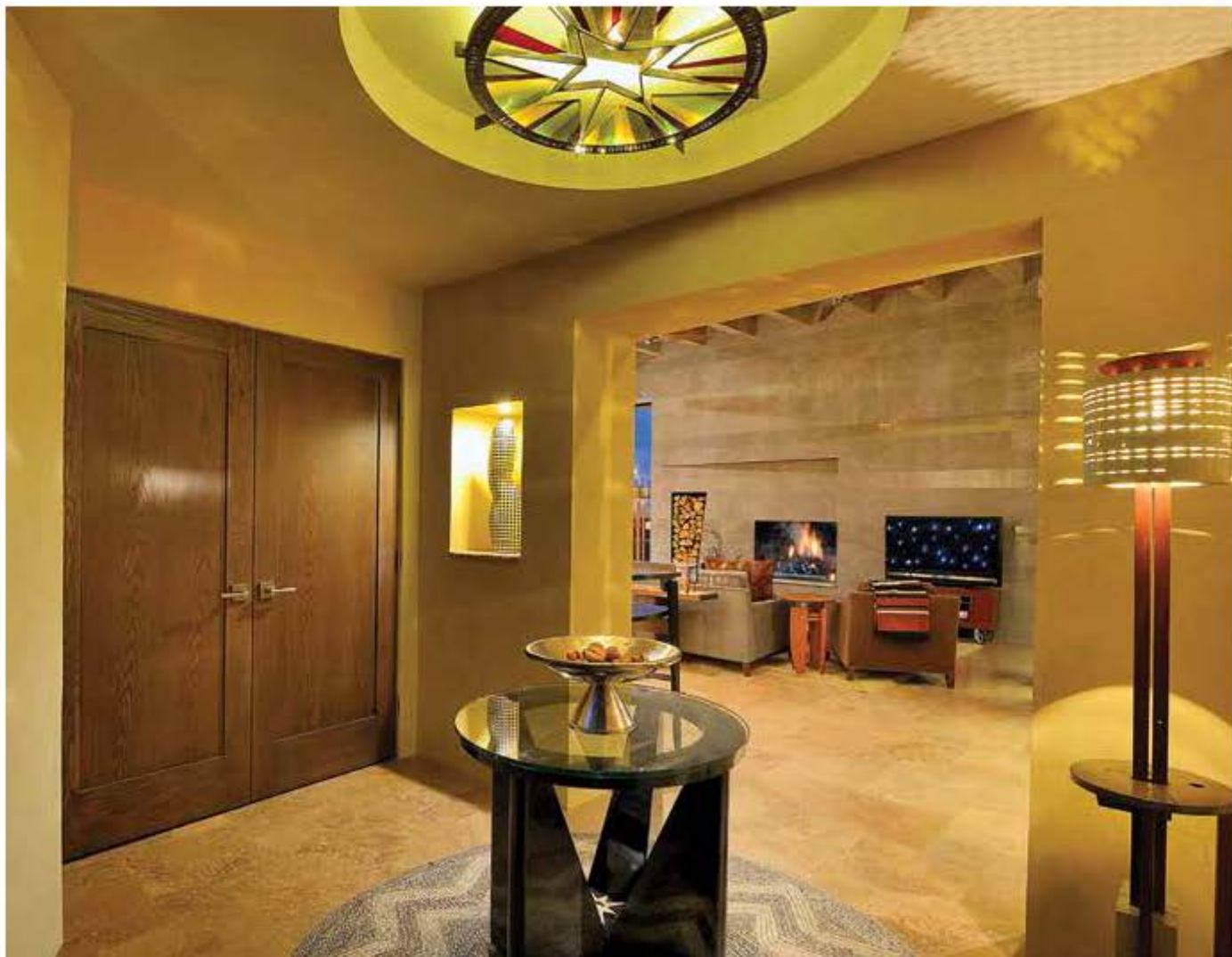
"Actually," James says, "it's not that big."

By the numbers, you'll find a single-level house of 2,700 square feet — three bedrooms, two-and-a-half bathrooms, plus a three-car garage — and a two-story studio and workshop of 1,300 square feet with a full bathroom. There are also too many trapezoids to count. Trapezoid windows. Trapezoid cabinets. Trapezoid walls. Trapezoid stepping stones. Even the staircase in the studio is trapezoid shaped.

Clockwise from top left: Trapezoid-shaped openings are carved out of stucco walls, creating a unique path to the entry courtyard. | A horizontal cutout frames a view of the Sangre de Cristo Mountains. | Corner windows of a second-floor studio are shielded from the intense New Mexico sun. | Wood beams on the home's north portal are simply supported by a stucco arch. | The entry into the great room provides a showcase for the table and lighting designed by James Evanson. The ceiling light combines bronze and fused glass.

"You see a theme here," Lisa says. But this is not surprising if you've followed the career of James Evanson.

Born in 1946 in Sidney, Montana, Evanson was a college art student before entering the ArtCenter College in





Los Angeles, California, to study industrial design. The Vietnam War interrupted his education — he served in the U.S. Army as a helicopter pilot — but he returned to the ArtCenter in 1971, and a few years later was at the Pratt Institute in Brooklyn, New York, where he completed the five-year program in two years. There, he also met Lisa, a New Jersey native who earned a degree in architecture from Yale University. By the late 1970s, Evanson was designing furniture, was a figure in New York's functional art movement, and he appeared in his first one-man international show in 1982. After marrying Lisa in 1984, they opened Evanson

Clockwise from top left: A side door into the kitchen is framed in part by a yellow wall that continues for 70 feet through the house. | A sunny portal overlooks the tops of piñon and juniper trees to the mountain range beyond. A low, steel water fountain parallels the portal. | An Aztec-inspired fountain of stone with bronze accents firmly stands in the entry courtyard garden. | In the kitchen, bar stools nestle up to a granite-topped island. The Lighthouse floor lamp, which stands to the left, was designed by the homeowner in 1984.

Showroom in New York City in the early 1990s, selling luxury high-end furniture. (Much of the furniture in their new home came from their showroom.)

Ten years ago, James began longing to return to the West. After looking in other states, the Evansons bought a house in





Santa Fe, "to break into the Santa Fe experience, so to speak," James says. "We thought if we didn't like it, we could sell it."

They lived in a condominium while remodeling a house, hiring Santa Fe's Prull Custom Builders for the construction. Satisfied with Santa Fe's climate, art scene and culture, the Evansons decided to design a permanent home together.

James handled the exterior. Lisa oversaw the interior and finishing colors. "We both sat around and yelled at each other," Lisa says, "but we both like the end result."

They knew what they wanted. "We're very contemporary," Lisa says. "Being able to mix the traditional and the modern is kind of the way we design furniture."

"I think that's the way to approach architecture here," James says. "It's really in a certain tradition, but then you try to push it." Every room offers spectacular views. Walls are layered — thicker for private space — and stretch outside, making the house seem much larger.

"Each area has a particular space, but it serves as one

Clockwise from top: Floor-to-ceiling windows punch through the slate fireplace wall. Alternating trapezoid panels, articulated by striped Southwestern upholstery, coordinate in color with the lacquer panel console across the room. | A glowing gold-leaf ceiling lights an anteroom, flanked by Evanson-designed furnishings. | Trapezoid tiles on the shower wall are illuminated by a skylight. | Bronze and ruby create a luxurious theme complemented by marble and concrete walls, a balance between the raw and the precious. | Marble-tile walls wrap the bathroom. A silver glass sink sits on the quartz slab. Custom bronze pulls are mounted on the walnut drawer fronts.

large grid," Lisa says. "It's not a big house, but it's exquisitely detailed."

Those details range from the drawers built into the studio's staircase to the light fixtures. While in New York, James experimented with cutting grooves into fiberboard and came up with "lighthouses," boxes surrounding a light bulb so that the light shines different patterns on the ceilings or walls. Several of his lighthouses rest on shelves throughout the home and studio. He also cast and fused glass and bronze together to make a light fixture for the main house's entryway.



The house is a beacon of light on the horizon, overlooking Los Alamos, New Mexico, in the distance.

"We wanted a playful, contemporary but transitional feel," Lisa says. "We didn't want it to feel too stark. Contemporary can sometimes feel that way."

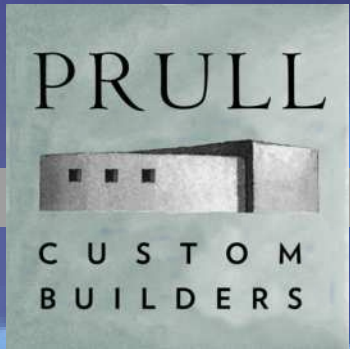
For construction, the Evansons again called upon Prull Custom Builders, founded by Will Prull in 1981. Although Prull has built contemporary homes in Santa Fe, he called the complexity in the Evanson project "extensive."

"Structurally, it's quite complex. You have a lot of plane changes in terms of window and door penetrations of walls," Prull says, adding that he had James on site when

framing the house to make sure all angles were as the architect envisioned.

The house went up in only 11 months and won Best Kitchen and Exceptional Collaboration Between Builder & Client honors at the 2017 Haciendas — A Parade of Homes.

"It's fun," Prull says, "because when someone has a vision as unique as they have, and you help bring that to fruition, and they're completely tickled by the outcome, you feel like you've just had a really great experience and that they're going to enjoy it for a long, long time." ■



prull.com

