

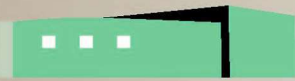


DESIGN | BUILD | STYLE | LANDSCAPE

Masters of Contemporary Craftsmanship



PRULL



C U S T O M
B U I L D E R S



prull.com • 505.438.8005



ON THE COVER

Marrying Mid-Century Modern with Mother Nature



© ROBERT RECK

On an early morning walk in Las Campanas, Will Prull discovered a lot, seated against the Bureau of Land Management fence line. Behind that fence, 68,000 acres of protected high desert boast views for miles, and nary a house to mar the horizon.

Prull and his business partner and wife, Jodi Vevoda, run Prull Custom Builders. Prull has been building high-end custom homes for 40 years. In that time, they have fostered deep partnerships with industry talent, both locally and outside of Santa Fe, and are known for well-executed design and detail. Building their own home meant designing a special space to showcase to potential new clients, as well as to love living in themselves.

Lot purchased, they called on architect Craig Hoopes, whose company, Hoopes + Associates Architects, has partnered with Prull on projects for over 25 years, many of them award-winning. Their familiarity lent a depth and vernacular to the design process. Hoopes sketched some iterations of an idea. Vevoda and Prull loved the final proposal—a mid-century modern framework with interlaced indoor/outdoor spaces and a touch of Frank Lloyd Wright in its soul. While Prull, as a company, is well versed in a variety of styles—Territorial, Pueblo Revival, modern



and contemporary – mid-century modern is the style that reflects the couple personally; vibrant, stylish and entirely approachable.

The home was designed as a backdrop for both the manmade artwork within and nature's scenery without. They carefully sited it to celebrate views from each room, but also strategized around the couple's art collection. "We laid out the predominant art pieces in a virtual manner," says Prull, referring to the pre-planned place for each piece. "We put a lot of thought into it before we built it," agrees Vevoda. "Art is such a focal point in this house. It set the tone for the design."

A nod to that mid-century modern theme, three roof lines rise in unison, one each over the main area, the master suite and the guest suite. Alaskan yellow cedar in

the ceiling runs in the direction of the slope, elongating the visual plane. "Visually and energetically these roofs rise out to the open spaces," says Prull.

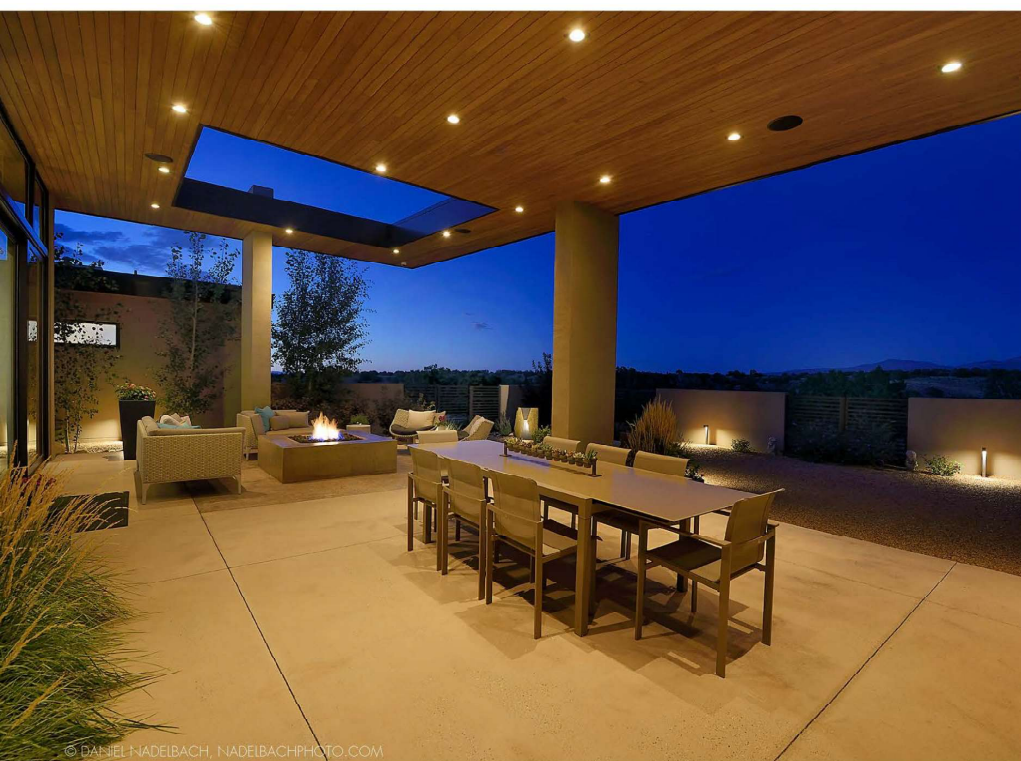
For the indoor-outdoor crossover, the exterior walls step forward and back, creating layers between nature and the inside. "It blurs the distinctions between the two and interplays them," says Prull. One can look through a succession of windows, to open and enclosed spaces, in series; a construct that melts the division between the two. Landscape architect Solange Serquis, of Serquis + Associates Landscape Architects was tasked with echoing that construct outdoors. She has a distinct talent for blurring the line between constructed landscape and the natural environment. "She designs not only with the vernacular of the home but also with what lies beyond," says Vevoda.



While open concept floorplans are popular, this home demonstrates a fresh take by riffing on a tenet of Frank Lloyd Wright. Wright used the concept of compression and expansion to impart a feeling of change when entering a room. Each room or hallway opens to another imbuing a sense of surprise. It's always unfolding, room to room. This home is compartmentalized, but not into traditional divisions. Stand in any of the well-defined rooms and it still feels huge and airy, with a constant visual continuation to the space beyond. Around every corner is a different view. "There is always a visual connection to the rest of the house," says Prull.

This characteristic of subtlety is a well-known Prull skill. "People often respond positively to a space without being able to articulate why," he says. "They're responding to the synergy of spatial relationships, good proportion, and the accurate intersection of materials, tone, texture and color. In addition to good architecture, you have to have proper material selections and proper execution."

Chandler Prewitt Design executed the interior design, mindfully playing up the rectilinear, mid-century modern theme, but also softening it in places. Prewitt chose the pillowy dining room chandelier, a centerpiece in its own right and another of those visual surprises. "This house is simple, elegant and harmonious," says Vevoda of Prewitt's work.



Vevoda and Prull love their home, as an extension of not only themselves, but their work. Says Vevoda, "It's a reflection of our sense of place and time." **IM**

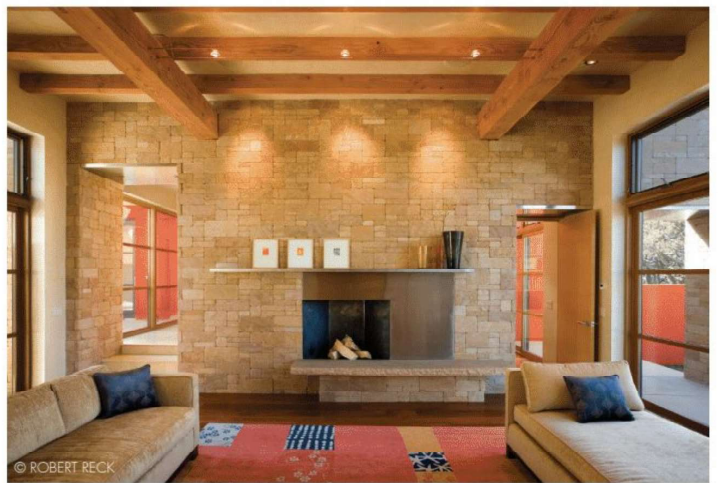




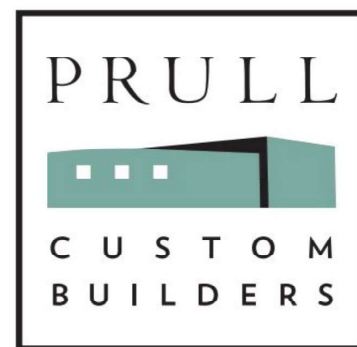
© ROBERT RECK



PHOTO BY PETER OGILVIE



© ROBERT RECK



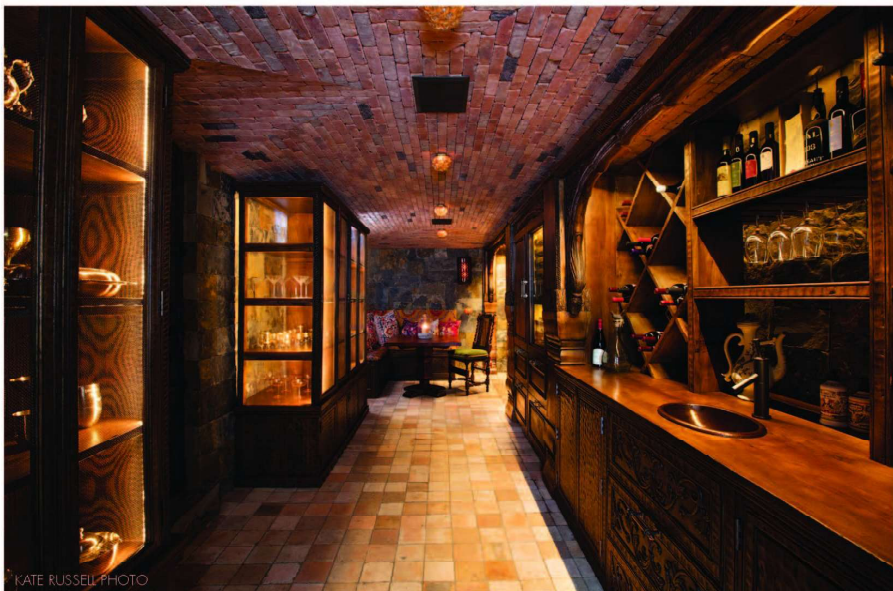
3204 CALLE MARIE
SANTA FE, NM 87507
505.438.8005
PRULL.COM

Since 1981 Prull Custom Builders has specialized in building high-end, one-of-a-kind, architect-designed custom homes in the Santa Fe community, consistently earning award recognition in both the AIA Excellence in Design Competitions and the Santa Fe Parade of Homes, including top honors with the most coveted Grand Hacienda Award in both 2018 and 2019.

Combining fine craftsmanship with exceptional professional management skills and state-of-the-art technical ingenuity, our team of seasoned professionals provides decades of combined industry experience. Regardless of size and complexity, each project receives the same unparalleled attention, with on-site supervision and collaborative teamwork to ensure the highest standard of precision and accountability. Our undisputed track record of dependability and accuracy in execution is the cornerstone of our company's reputation and a source of pride for everyone associated with Prull Custom Builders.

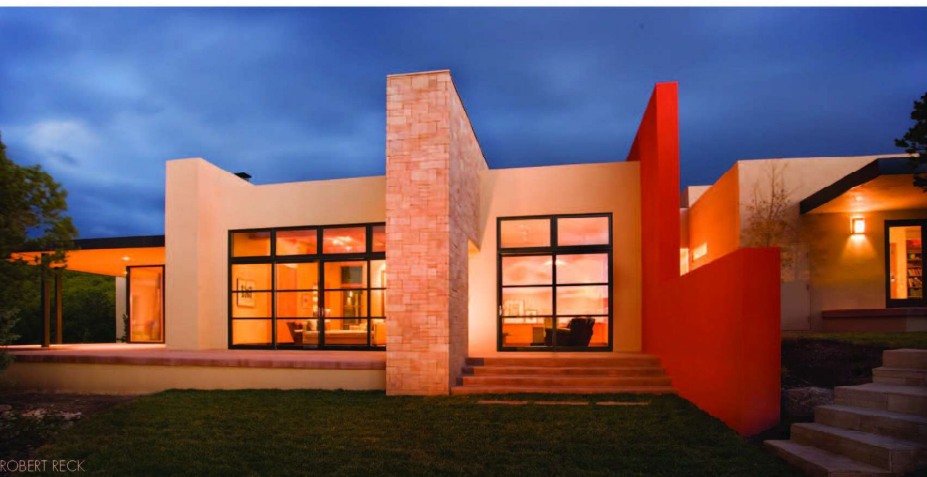
"Prull Custom Builders have long been known as one of the exceptional general contractors in Santa Fe and my collaborations with them have proven that to be the case. Their team provides the highest level of customer service and they care deeply about ethically serving their clients."

- Archaeo Architects



“Best building experience we have ever had. No detail was overlooked. Easy and professional staff. Beautiful home. Well thought out and a joy to live in.”

- Rick and Pam Nist



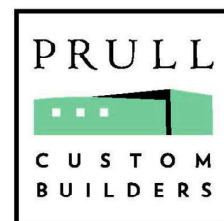
ROBERT RECK



ROBERT RECK

Over the years, our projects have increased in scope and complexity, elevating our level of expertise across all design acumens, further demonstrating the breadth and depth of our extensive and varied body of work.

As we celebrate our 40th year in business, first and foremost, we would like to salute our talented team of architect partners. Over time our team has grown in both number and influence, spanning the country and bringing an exceptional body of design work to the forefront. From our decades-long relationships with locally celebrated architects Craig Hoopes, Hoopes + Associates Architects; Jon Dick, Archaeo Architects; Eric Enfield, Architectural Alliance; Lorn Tryk, Lorn Tryk Architects; Dale Zinn, Dale F. Zinn & Associates; and Mark Rohde, RMKM Architecture, PC to more recent long-distance collaboration with Kilbane Architecture, Inc./Scottsdale; Far + Dang/ Dallas; Bohlin Cywinski Jackson/San Francisco; and Arkin Tilt Architects/Berkeley, CA. The list continues to grow, bringing fresh architectural perspective and intrigue to our landscape.



3204 CALLE MARIE, SANTA FE, NM 87507
505.438.8005 | PRULL.COM



© DANIEL NADIRBACH, NADIRBACHPHOTO.COM



KATE RUSSELL PHOTO



KATE RUSSELL PHOTO



We extend our gratitude to all of our build partners, including architects, interior designers, landscape architects and our entire community of exceptional craftsman, artisans and tradesman. Special recognition to Prull's highly skilled team of supervisors and crew, who represent our work from start to finish, inspired by the challenges and committed to its excellence.

We honor this rich and distinguished history and look forward to its continued evolution in the years ahead.

"I had the privilege to work with Will Prull and Jodi Vevoda. It was a fantastic experience with close collaboration and feedback. The end result far exceeded all our expectations. Looking forward to many more projects with the Prull team in the future!"

- Chandler Prewitt Interior Design



3204 CALLE MARIE, SANTA FE, NM 87507
505.438.8005 | PRULL.COM